



by

JH INDUSTRIES, INC.

Railboards

Designed to connect your dock with a railcar, rugged under-brace fits your loading requirements for safe and positive positioning. Each railboard is specifically engineered and designed to meet the dimensions and specifications for each dock site. Several design applications are available including rectangular, flared, refrigerator car, car to car and plug door cars. Our non-slip high strength plate decking ensures additional safety.

Rectangular Board



Flared Board



FEATURES:

- Standard capacities up to 40,000 lbs. (larger capacities also available)
- Rugged all welded steel construction.
- Heavy understructure for safety and durability.
- Drop through lift loops or lift chains standard.
- Available in rectangular or flared.
- Heavy understructure spans the gap and locks ramp into place with 8" automatic ring adjustments. (14" max adjustment)

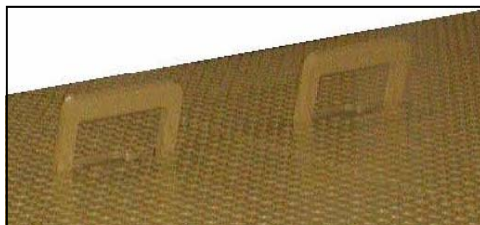


8" Locking Rings

LIFTING DEVICES:

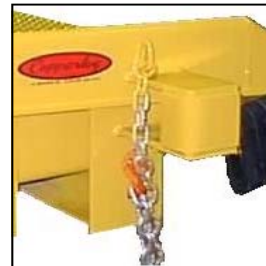
LIFT LOOPS

- Come standard on all railboards.
- Spaced on 24" centers.
- Located 24" from approach end of railboard to accommodate different fork sizes.



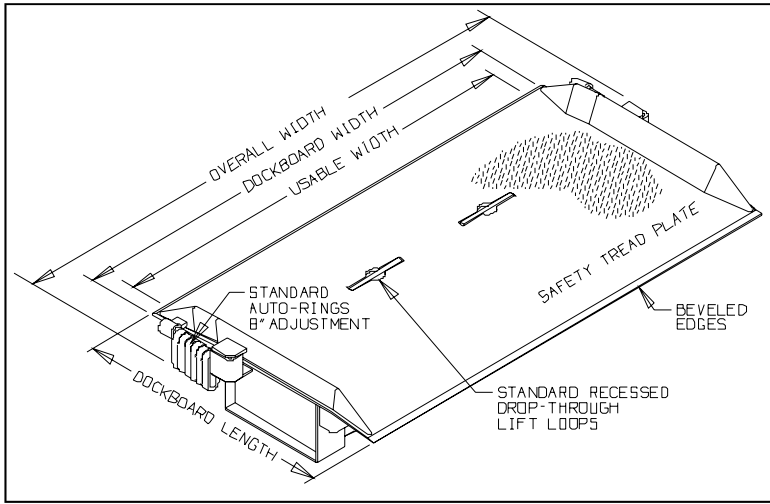
LIFT CHAINS

- Available in 1 or 2 piece.
- Center hooks disconnect during use.
- Secured to the curb.
- Available on all railboards.

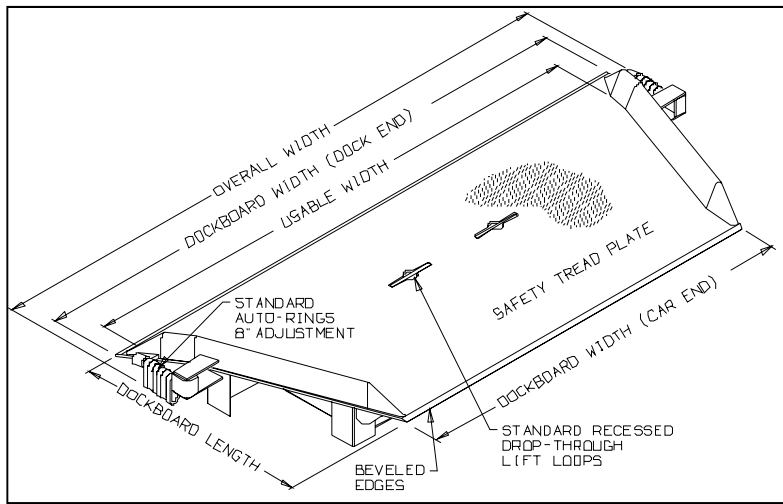




Rectangular Board



Flared Board

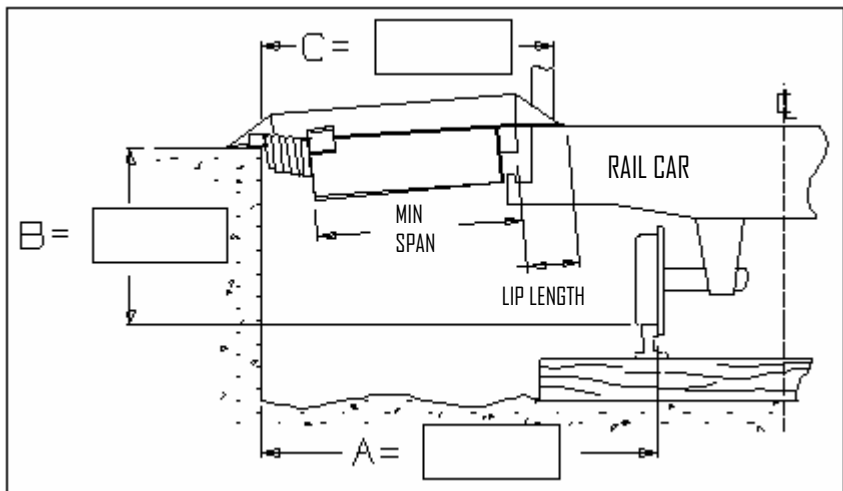


The following information is required to determine proper railboard capacity, length, width and span.

Dock Dimensions:

- "A" - Inside of the inside rail to the face of the dock.
- "B" - Top of the rail to the top of the dock.
- "C" - Edge of the top of the dock to the inside of the car door.
- Width of loading dock door.
- Width of railcar door.

Railboard Length = A - 13 = Length
Minimum Span = A - 38 = Span



*Above calculations assume the track is straight and parallel to the dock. Consult a Copperloy Rail Survey Form for Curved or Angled track situations.

TYPES OF CARS SERVICED

- | | |
|-------------------------|-----------------------|
| ◇ Boxcars, Sliding Door | ◇ Auto Parts cars |
| ◇ Boxcars, Plug Door | ◇ All other door cars |
| ◇ Insulated Cars | ◇ "Old Type Reefers" |
| ◇ Mechanical Reefers | ◇ Other _____ |

TYPE OF INDUSTRY

- | | |
|----------------------|-------------------------|
| ◇ Paper Rolls | ◇ Frozen Food |
| ◇ Building Materials | ◇ General Manufacturing |
| ◇ Food or Beverage | ◇ Other _____ |

EQUIPMENT USED

- | | | |
|---------------------------|-----------|-------|
| ◇ Fork Lift Truck, Rider | Make | _____ |
| ◇ Fork Lift Truck, Walkie | Model | _____ |
| ◇ Pallet Jack | Cap. | _____ |
| ◇ Other | Max Load | _____ |
| | Truck Wt. | _____ |

ATTACHMENTS

- | | |
|--------------------|---------------|
| ◇ Paper Roll Clamp | ◇ Slip Sheets |
| ◇ Other _____ | |